

## STARTING TODAY

The fairytale relationship between a prosecuting attorney and her mysterious protector.

**Remember Love:** Vincent becomes increasingly frustrated by the cloistered, hidden life he leads.



Catherine LINDA HAMILTON  
Vincent RON PERLMAN  
Father ROY DOTRICE  
Joe Maxwell JAY AVOONE  
Mouse DAVID GREENLANE

## 8.30

### Beauty and the Beast

A modern day fairy-tale about the relationship between a prosecuting attorney and her mysterious protector.

**God Bless the Child:** A pregnant and troubled young woman becomes strongly attracted to Vincent.

Catherine LINDA HAMILTON  
Vincent RON PERLMAN  
Father ROY DOTRICE  
Lena KATY BOYER  
Director GUS TRIKONIS

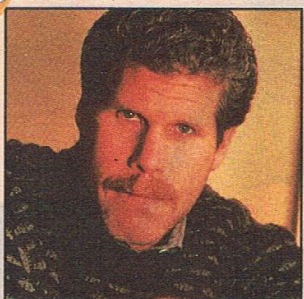


**The bewitched Linda Hamilton.**  
8.30

### Beauty and the Beast

**Brothers:** Father's son disrupts the community when he arrives with a tortured and violent giant of a man. (G)

Catherine LINDA HAMILTON  
Vincent RON PERLMAN  
Father ROY DOTRICE  
Joe Maxwell JAY AVOONE  
Mouse DAVID GREENLEE  
Devin BARRY ABBOTT  
Charles KEVIN SCANNELL



Ron Perlman - the man behind the makeup.

## 8.30

### Beauty and the Beast

**When the Blue Bird Sings:** A series of mysterious occurrences, involving a supposedly dead artist, confuses Catherine. (PGR)

## Beauty and the Beast

### FEATURE PAGE 40

A modern-day fairy-tale about the relationship between a prosecuting attorney and her mysterious protector.



**Roy Dotrice**  
**Ashes, Ashes:** Vincent and Catherine give refuge to a Soviet defector, unaware he has a contagious disease.

Catherine LINDA HAMILTON  
Vincent RON PERLMAN  
Father ROY DOTRICE  
Dimitri ADRIAN PAUL



**Catherine (Linda Hamilton) gives courage tonight.**

## 8.30

### Beauty and the Beast

**A Fair and Perfect Knight:**

An intelligent young man from the community below becomes emotionally troubled when he is accepted into a college above. (PGR)

## 8.30

### Beauty and the Beast

A modern day fairy-tale about the relationship between a prosecuting attorney and her mysterious protector.

**A Gentle Rain:** A manslaughter case involving one of the underworld's model citizens causes mixed feelings in Catherine. (PGR)

Catherine LINDA HAMILTON  
Vincent RON PERLMAN  
Father ROY DOTRICE  
Joe Maxwell JAY AVOONE  
Mouse DAVID GREENLEE  
Kanin SCOTT JAECK  
Olivia ELAYNE HEILVELL  
Mrs Davis PIPER LAURIE

## 8.30

### Beauty and the Beast

**The Watcher:** Catherine is terrorised by a sinister voyeur. (AO)

Catherine LINDA HAMILTON  
Vincent RON PERLMAN  
Father ROY DOTRICE  
Joe Maxwell JAY AVOONE  
Jenny TERRI HANAUER  
The Watcher DAVID NEIDORF  
REPUBLIC

### Beauty and the Beast

**A Kingdom by the Sea:** Catherine is quizzed by two CIA agents about her ex-suitor Elliott, while Stanley, a retired sanitation worker, is gunned down in his seedy apartment. (AO, see page 90 for cast)

WITT/THOMAS

## Beauty and the Beast

A modern day fairy-tale about the relationship between a prosecuting attorney and her mysterious protector.

**Chamber Music:** Vincent tries to help a former underground music prodigy who is now a teenage drug addict.

Catherine LINDA HAMILTON  
Vincent RON PERLMAN  
Father ROY DOTRICE  
Rolley TERRANCE ELLIS  
Director GUS TRIKONIS

## 8.30

### Beauty and the Beast

**Sticks and Stones:** A deaf woman from the world below becomes involved in a tough deaf gang in the world above. (AO)

Catherine LINDA HAMILTON  
Vincent RON PERLMAN  
Father ROY DOTRICE  
Laura TERRYLENE  
Jerry RON MARQUETTE  
Lincoln ED KELLY  
Director BRUCE MALMUTH

## 8.30

### Beauty and the Beast

A modern day fairy-tale about the relationship between a prosecuting attorney and her mysterious protector.

**Orphans:** Catherine mourns the death of her father and wonders if she should enter the world below forever. (PGR)

Catherine LINDA HAMILTON  
Vincent RON PERLMAN  
Father ROY DOTRICE  
Joe Maxwell JAY AVOONE  
Mouse DAVID GREENLEE  
Charles Chandler JOHN MCMARTIN

## 8.30

### Beauty and the Beast

**A Distant Shore:**

Catherine is taken far away from her protector when she investigates a case involving tape piracy and murder. (Final)

Catherine LINDA HAMILTON  
Vincent RON PERLMAN  
Father ROY DOTRICE  
Joe Maxwell JAY AVOONE  
Rita Escobar CAROLYN FINNEY  
Gina Barrett DEBRA ENGLE  
Mel Rae ANDY BLOCH

### Beauty and the Beast

**Ceremony of Innocence:** Revelations about Vincent's birth force a deadly showdown between the man/beast and the evil Paracelsus. (AO, see page 90 for cast)

WITT/THOMAS

### Beauty and the Beast

**Though Lovers Be Lost:** Catherine is kidnapped by a crime syndicate and Vincent rushes to save her. (AO, part one of a two-part story, see page 86 for cast)

## Beauty and the Beast



**Dead of Winter:** The underground residents prepare for winterfest but a bitter and vengeful exile has plans for destruction.

### Beauty and the Beast

A modern day fairy-tale about the relationship between a prosecuting attorney and her mysterious protector.

**Labyrinths:** Catherine's 14-year-old neighbour Brian takes refuge below and unwittingly endangers the Tunnel World's existence. (G)

### Beauty and the Beast

#### FEATURE PAGE 70

A modern day fairy-tale about the relationship between a prosecuting attorney and her mysterious protector.

**The Outsiders:** Blood is spilled when a violent, transient gang invades the world below.

Catherine LINDA HAMILTON  
Vincent RON PERLMAN  
Father ROY DOTRICE  
Joe Maxwell JAY AVOONE  
Mouse DAVID GREENLEE  
William RITCH BRINKLEY  
Pascal ARMIN SHIMERMAN  
Mary ELLEN GEER

### Beauty and the Beast

#### STARTS TODAY

A drama series about Catherine, a New York lawyer, and Vincent, a crusader for justice living in the sewers.

**Trial:** Catherine fights to avenge the death of a five-year-old boy at the hands of his abusive father, a prominent Wall Street celebrity.

### Beauty and the Beast

**The Rest Is Silence:** After unexpectedly waking up in Central Park, Vincent becomes fearful that he is losing control of his dark side. (AO, see page 90 for

