

Skinny Skull Crochet Scarf

by Angie © 2025

Materials: Worsted weight yarn, 4mm/G crochet hook. Any yarn with recommended hook can be used, or per yarn used. Variegated yarn works very well.

Size: Using above, the width will be approximately 3"/7.5 cm.

Abbreviations: ch: chain, dc: double crochet ; sc: single crochet ; sk: skip ; st(s): stitch(es)

Notes: Can be made in two lengths joined in the middle, so all skulls face downwards when worn.

Turning ch 2 NEVER counts as the first sc in the row. Turning ch 3 ALWAYS counts as first dc in the row.

Instructions:

Foundation Row: Ch 12, turn

Row 1: Ch 2, sc in third ch and every ch across (10 sc), ch 2 turn.

Row 2: Sc in first sc and second sc, ch 1, sk 1, dc in next four sc, ch 1, sc in final two scs, ch 2 turn.

Row 3: Sc in first three sc, sc in first dc, ch 4, sc in fourth dc and final three sc.

Row 4: Ch 3, dc in next sc, ch 5, sc in ch 4 loop, ch 5, dc in last two sc, ch 2, turn.

Row 5: Sc in first two dc, 5 sc in ch 5 loop, sc in ch 4 loop, 5 sc in ch 5 loop, sc in last two sts, turn.

Row 6: Ch 3, sc in next sc, ch 2, skip two, sc in next two sts, skip centre sc, sc in next two sts, ch 2, sc in next sc, dc in last st. Ch 2, turn.

Repeat rows 2-6 until one repeat short of desired length.

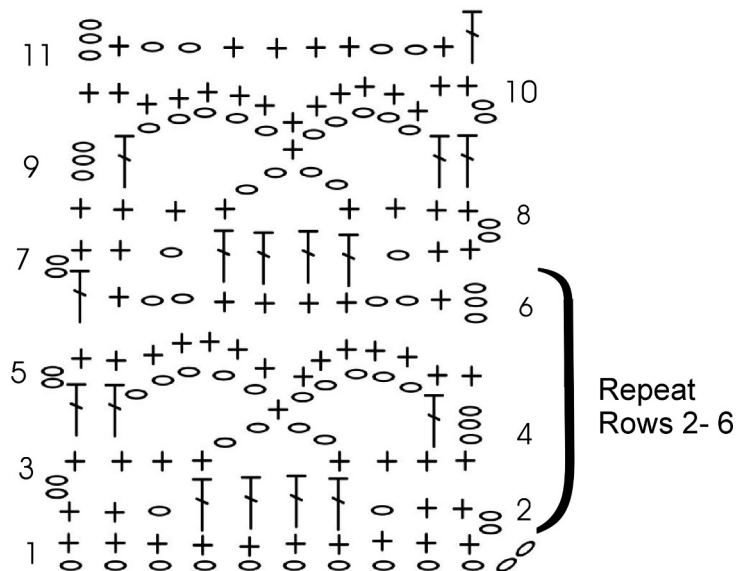
Finish last repeat on Row 5.

Final Row 6: Make row of sc, replacing dcs and spaces with sc (10 sts).

Weave in ends. May be blocked using a damp cloth and a hot iron.

Chart:

Skinny Skull Scarf Chart



Foundation chain: 12

○ Chain

+ Single crochet

T Double crochet

