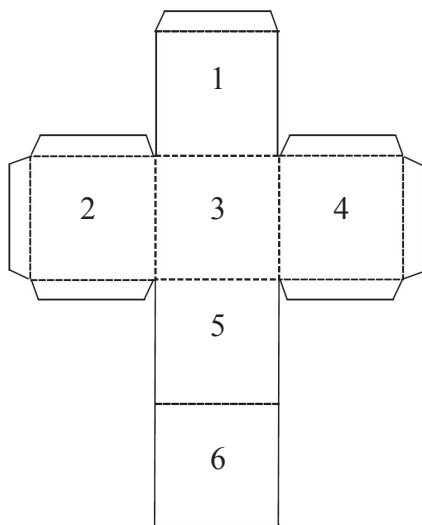
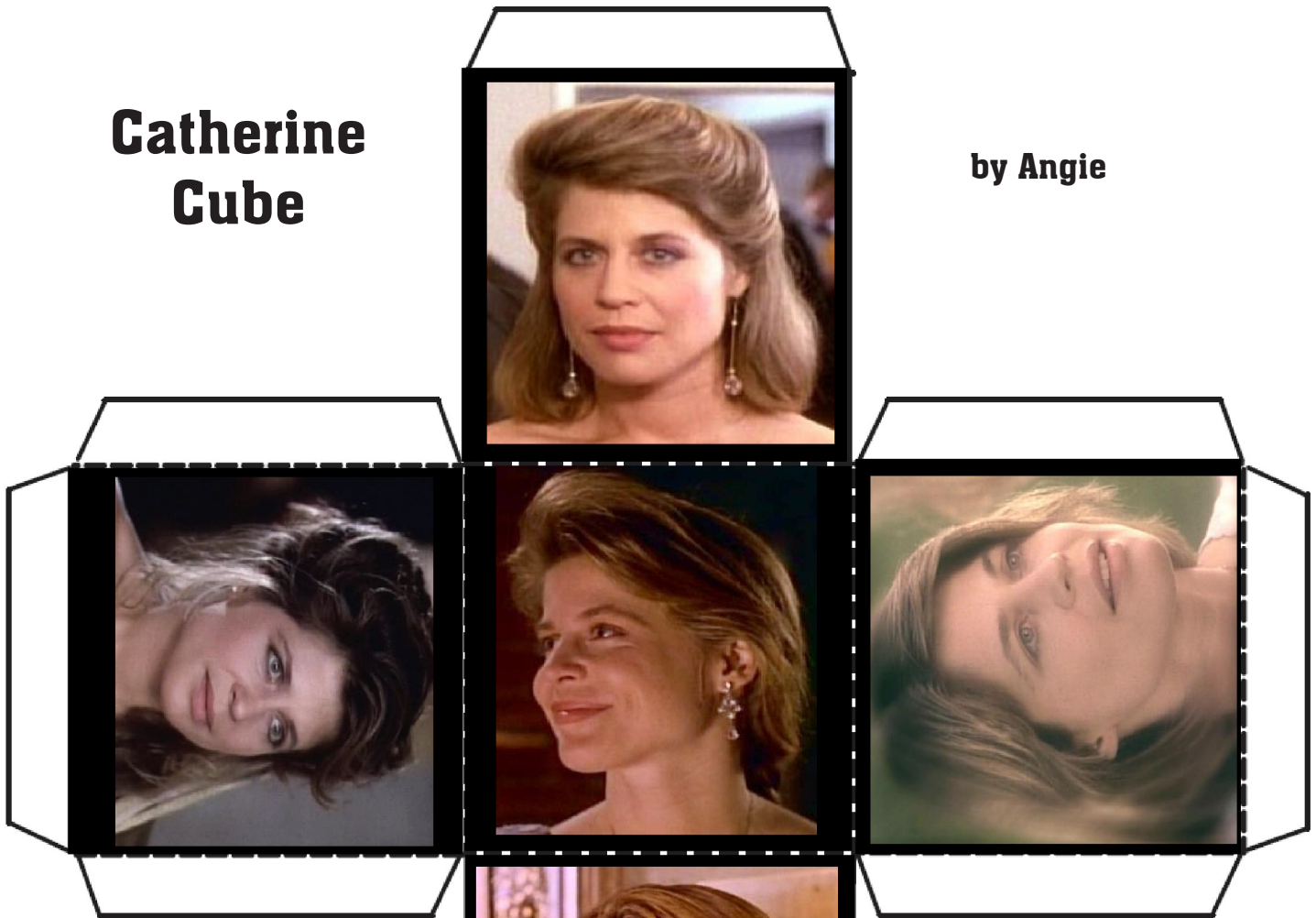


Catherine Cube

by Angie



Instructions:

- i. Print page.
- ii. Cut along solid lines.
- iii. From reverse, fold flaps up.
- iv. On right side, fold images dotted lines.
- v. Glue flaps on top side of images 2 and 4 to image 1 sides.
- v. Glue bottom flaps of sides 2 and 4 to image 5.
- vi. Glue remaining three end flaps to image 6.

Note: Glue stick is recommended.